

Spring Concert

Sunday, May 17, 2026
4:00 p.m.

Nicholas Music Center
Rutgers University
New Brunswick

Arise!

New Jersey Youth Chorus
WhartonARTS

Helen H. Cha-Pyo, Artistic Director

2025
2026
SEASON

discover
jersey
arts

You Gotta Be Here

Check out behind-the-scenes stories of shows like this & get exclusive ticket deals!

JerseyArts.com

PRESENTED BY

Artride
NEW JERSEY



Co-founded by, and currently supported by funds from, the New Jersey State Council on the Arts.

Dear **Wharton Arts** Community,

Welcome to the 2025–2026 season at Wharton Arts! I'm thrilled to invite you into a year that dares us to dream boldly, listen deeply, and arise together with purpose. Our theme, **Arise!**, calls us to create with courage and connect across generations and cultures through **Artistry, Representation, Inspiration, Self-Expression, and Empathy**. This season, **Arise!** is more than a theme—its an invitation to action. In a world yearning for light, we turn to the arts to uplift voices, spark imagination, and celebrate the brilliance of our students, faculty, and teaching artists. Through meaningful learning, inspired teaching, dynamic performances, and inclusive programming, we'll build a vibrant community rooted in creativity, collaboration, and hope.

Let us arise together!

With gratitude,



A handwritten signature in cursive script that reads "Helen H. Cha-Pyo".

Helen H. Cha-Pyo
Artistic Director

Spring invites us to look ahead with optimism, purpose, and renewed energy. I am truly delighted to be part of Wharton Arts at this exciting and pivotal moment in our history.

My connection to this organization is deeply personal. For thirteen years, I watched my own children grow and thrive as members of the New Jersey Youth Chorus. The joy, artistic training, and personal growth they gained here were transformative for our family. Driven by a desire to steward that same experience for future generations, I joined the Board of Trustees two years ago. Now, as Interim Executive Director, I am committed to providing the steady leadership and strategic vision necessary to ensure more families can find the same inspiration and community we did.

At the heart of our future is the integration of our four signature programs: the **New Jersey Youth Chorus, New Jersey Youth Symphony, Paterson Music Project, and Performing Arts School**. Together, they form a connected artistic pathway that nurtures young people at every stage of their creative journey. By strengthening collaboration across these programs, expanding access, and deepening our community impact, we are creating opportunities that extend far beyond the stage.

While each program has its own distinct voice, all are guided by a shared belief in the transformative power of the performing arts. Thank you for being part of this journey. I look forward to all we will create together this spring and beyond.



A handwritten signature in cursive script that reads "Erika V. Fanelle".

Erika Fanelle
Trustee, Interim Executive Director



Creating our future, together.

New Jersey Youth Chorus

WhartonARTS

PROGRAM

PRIMO CORO

Shady Grove Appalachian Folk Song
arr. Robert I. Hugh

“Shady Grove” is believed to have originated in eastern Kentucky around the beginning of the 20th century, but is likely quite a bit older. It was crafted over many years by a community, or multiple communities, who changed and added to the song as they saw fit.

“Shady Grove” is a quintessential folk song, one that was written by many, and has no ‘correct’ or ‘incorrect’ lyrics. It grew in popularity during the midcentury bluegrass and folk revival. The lyrics describes the true love of a young man’s life and his hope they will wed, and it is sometimes identified as a ‘courting song.’

In this arrangement, you will hear layered ostinati (repeated patterns), the incorporation of two other traditional American folk songs (“I Wonder Where Mariah’s Gone” and “Old Betty Larkin”) and the vocal lines sung imitatively and augmented.

Schmückt das frohe Fest mit Maien Georg Philipp Telemann
arr. Eloise Porter

Schmückt das frohe Fest mit Maien!

Make this happy celebration beautiful with
flowers and greenery!

*Eilet, eure Brunst zu weihen,
macht des Herzens Tore weit!*

Hurry and bring your joy,
and open your hearts wide!

*Der Geist, dem tausend Geister
frohen will jetzt in unsern
Seelen wohnen.*

The Spirit honored by countless souls now
comes to dwell within our hearts.

*O tröstlich's Pfand,
O tröstlich's Pfand der Seligkeit!*

What a comforting and joyful blessing!

Soloist: *Avanti Kapilavai*

Ain't Gonna' Let Nobody Turn Me Around Traditional Spiritual
additional text by Langston Hughes
arr. Rollo Dilworth

“Ain't Gonna Let Nobody Turn Me Around” is a Freedom Song that was sung as an anthem during the Civil Rights Movement. The texts of these Freedom Songs communicated messages of struggle, faith, determination and perseverance. Text from a Langston Hughes poem titled “Words Like Freedom” are used like verses in this arrangement.

COR AMICI

What If? Kara Stacy Bedwell

Gunjo (Azure) Miki Oda
arr. Takatomi Nobunaga

In 2011, a disastrous earthquake and tsunami displaced most of the students from Odaka Junior High School in the Fukushima prefecture. Of the 106 students in their graduating class, two died in the tsunami, and most of the rest fled to other regions. When the school reopened there were only seven students that returned. The lyrics of this song were written by these remaining students as they thought about their classmates. The school identifies closely with the color azure, as it is a coastal town. The students thought although they were scattered across the map, they were all united by the same azure sky and would one day be reunited in their azure town.

Translation:

It was just a town where I was born, a town azure, and then I met you
We spent days, shared hopes, together always in this town, azure
Now, we must leave, walk away, and look at azure from far away
Will it be different? Or will we see the same sky elsewhere?
Away from town azure?

We wave our goodbyes with dreams of tomorrow, away from town azure
Your smiling faces fading from view, staying in my mind, staying in town azure

There were fireworks that day, and a sunset that colored the sky
under that blanket of colors, you were there, always there
With all those colors, how could I not know what happiness was?
While on bicycle rides to the seaside beside you creating these memories?
But when I close my eyes, I don't see the colors, all I see is the town, azure.

I open my eyes and see that two years have passed
A March wind blows, and then, I remember you

Let these winds bring these melodies of the most distant of places
Beyond that colored sky, reaching everything that is precious
With glistening eyes, we look up at the night sky
And see hope shining, and hope tells us that it shines too,
In that that town, still shining, still azure, waiting for us to come home

We will meet again, in that town
And our promises will bring us home
And we will never fade, in the memory of that town azure.

See you again in that town azure

Take Me to the Water.....Rollo Dilworth
Additional lyrics from African-American Spirituals

SENIOR SONG

Cups (When I'm Gone) A.P. Carter,
Luisa Gerstein, Heloise Tunstall Behrens
Arr. Deke Sharon

SOLA VOCE

Let's Imitate Her Notes Above George Frederick Handel
(from *Alexander's Feast*) ed. Nick Page

George Frederick Handel (1685-1759) is best known for his sacred oratorio *Messiah*. "Let's Imitate Her Notes Above" is from Handel's secular oratorio *Alexander's Feast*. The great English writer John Dryden wrote the words in 1697 to celebrate the patron saint of music, St. Cecilia. The entire work is not only a tribute to the saint, but also a tribute to music. Handel performed *Alexander's Feast* twenty-five times in his lifetime, making many revisions along the way.

Take This Gift.....Tracy Wong

Space Hurricane Francisco J Núñez

"A space hurricane is similar to a storm we experience, but happens high up in the sky, far beyond Earth. Imagine a huge swirling funnel in the sky, like a tornado, but even bigger! This space hurricane happens when the weather is very calm and quiet. It is a special kind of storm that you cannot see with your eyes, but scientists can study it using special instruments. The music I created for this piece is like a whirlwind of sound. I used different words from different languages, like Greek, Japanese, Spanish, French, and English to describe the hurricane. I also made the vocal sounds colorful and diverse, just like all the beautiful colors you see in the clouds." - Francisco Nunez

Soloists: *Olivia Bryson, Sharanya Bhattacharya,
Vedha Nandakumar, Tia Praveen*

Crowded Table..... Natalie Hemby, Lori McKenna, and Brandi Carlile
arr. Andrea Ramsey

Soloist: *Nola Farese*

CAMERATA

I Can' Tarry..... Traditional Spiritual
arr. Stacey V. Gibbs

Let It Be You Kyra Stahr

"Let it be you" is a poem by American poet Sara Teasdale (1884–1933) focused on enduring love, memory, and death. It features a speaker asking a loved one to be present at their passing, asking them to offer a final, familiar "Good-night" without tears.

We are the music makersReginal Wright

We are the music makers,
And we are the dreamers of dreams,
Wandering by lone sea-breakers,
And sitting by desolate streams; —
World-losers and world-forsakers,
On whom the pale moon gleams:
Yet we are the movers and shakers
Of the world for ever, it seems.
~Arthur O'Shaughnessy

CORISTE

Lineage..... Andrea Ramsey

American poet Margaret Walker (1915-1998) is known for her work that depicts life in the south, pulling from her childhood experiences in Alabama and Louisiana. *Lineage* is a 2-stanza, 12-line poem that does not contain a rhyme scheme. Walker uses repetition of the line "my grandmothers were strong" to form a refrain of sorts. Walker shifts from the past tense to the present tense, back to the past tense while discussing her grandmothers.

My grandmothers were strong.
They followed plows and bent to toil.
They moved through fields sowing seed.
They touched earth and grain grew.
They were full of sturdiness and singing.
My grandmothers were strong.

My grandmothers are full of memories
Smelling of soap and onions and wet clay
With veins rolling roughly over quick hands
They have many clean words to say.
My grandmothers were strong.
Why am I not as they?

Poor Wayfaring Stranger American Folk Hymn
arr. Jonathan Rodgers

Soloist: *Diya Nandakumar*

Ergen Deda Peter Lyondev

*Ergen deda cherven deda, ei taka, pa taka
Nakrivil e kapacheto, ei taka, pa taka
Na na gore, na na dole, ei taka pa taka
Pa otide u seloto, ei taka pa taka
Ta se vana na oroto, ei taka pa taka
Na oroto do momite, ei taka pa taka
Svite momi pobegali, ei taka pa taka
Ostanala naimalkata, ei taka pa taka
Naimalkata Angelina, ei taka pa taka.*

The old bachelor, red-faced old man,
like this and like that, (nonsense syllables)
wearing his peasant hat sideways,
like this and like that, etc.
tipped up and down,
He went to the village,
and joined the circle dance,
to dance next to the maidens,
All the maidens ran away,
only the youngest one stayed,
the youngest one, Angelina.

Soloists: *Tarika Nirula, Jane Nys,
Meera Saha Choudhury, Elizabeth Villacres*

I Got Rhythm George Gershwin
arr. Michael Neaum

Soloist: *Noa Santoro*

SENIOR RECOGNITION

CORISTE AND CAMERATA

Blessing Katie Moran Bart

All NJYC alumni are invited to join us.



Made possible by funds from the New Jersey State Council on the Arts, a partner agency of the National Endowment for the Arts.

NEW JERSEY YOUTH CHORUS ARTISTIC STAFF

TRISH JOYCE



Founder & Director
Coriste Director, Primo Coro Director

Patricia Joyce received her Bachelor of Music degree, magna cum laude, in Music Education from Marywood College in Scranton, PA, and her Master of Music degree, With Distinction, in Music Education from Westminster Choir College in Princeton, NJ. She completed certification in Kodaly Methodology from the Kodaly Musical Training Institute, Hartford, Connecticut.

Trish began her teaching career in the Pennsylvania schools, and taught in the Bernardsville schools in New Jersey. She has served as an adjunct teacher in the Music Education Department of Westminster Choir College in Princeton, NJ, and at the Mason Gross School of the Arts, Rutgers University. She has presented workshops, reading sessions, and adjudicated festivals for the New Jersey American Choral Directors Association and the New Jersey Music Educators Association. She has conducted the New Jersey All-State Women's Choir, the Central New Jersey Junior High Honors Choir, the Central New Jersey Elementary Honors Choir, the North Jersey Junior High Women's Honors Choir, and Children's Choir Festivals in Pennsylvania, Vermont, and Virginia.

Trish has served on the Board of the New Jersey Chapter of the American Choral Directors Association as President, Vice President, and as the Repertoire and Standards Chair for Children's Choirs. She was the Co-Chair for the American Choral Directors Association's National Children's Choirs Conductors Retreat, held in New Jersey in January, 2016. She received Marywood University's 2016 Award of Excellence in Creative and Performing Arts. In addition, she has served as Associate Organist and Choirmaster at St. Bernard's Church in Bernardsville, NJ, Interim Director of Music at Christ Church in Summit, NJ, Interim Director of Music at Corpus Christi Church in Chatham,, NJ and continues freelance work at many other churches in northern and central NJ.

DANIEL MALLOY



Camerata Director, Coro Vivo Director

Daniel Malloy received his Bachelor of Music degree in Music Education from The College of New Jersey and his Master of Music Education degree from Florida State University. He is the Choir Director at Newton High School where he directs three levels of curricular choir as well as

a chamber choir and an a cappella group. He also teaches AP Music Theory and has recently established a music technology program. Dan previously worked in the Madison Public Schools where he taught K-5 general music and choir before going on to teach high school in the same district. At Madison High School he taught chorus, dance, acting, and theater technology, and directed an extracurricular jazz choir. Dan also produced and music directed the spring musicals, for which he earned a Paper Mill Rising Star Award for Best Overall Production in 2019.

Most recently, Dan conducted the 2024 All-North Jersey High School Treble Chorus. He currently serves on the NJ-ACDA board as the High School Youth R&R Chair. He previously taught private voice lessons at the Roxbury Community School and sang with Harmonium Choral Society for many years. Currently, Dan can be seen performing with Vocala Ensemble under the direction of Martin Şedek and Elevation under the direction of Arreon A. Harley-Emerson. Additionally, Dan is active as a performer and music director in musical theater across North Jersey.

JOANNA SCARANGELLO



Sola Voce Director

Joanna Scarangelo is an active conductor and music teacher in northern New Jersey. Ms. Scarangelo received her Master of Arts in Music Education from Montclair State University and her Bachelor of Arts in Music Education from Lycoming College in Williamsport, PA. Ms. Scarangelo is currently employed by the Mount Olive

School District, where she serves as the Director of Choirs for Mount Olive Middle School. In addition, Ms. Scarangelo is also currently serving as the Conductor of Sola Voce, an ensemble of New Jersey Youth Chorus.

Ms. Scarangelo's choirs have been invited to perform at Carnegie Hall, Radio City Music Hall, Walt Disney World, 2019 and 2024 NJMEA State Conferences, and the 2020 NJSMA Elementary Workshop. Ms. Scarangelo has presented sessions at NJMEA, NJSMA, and NJACDA conferences, directed the 2020 MACDA Intermediate Honor Choir, and directed the 2024 NJSMA Region I Intermediate Treble Choir. Ms. Scarangelo is the Vice President of the Morris Area Choral Directors Association. In 2023, Ms. Scarangelo was proudly awarded the Exemplary Educator Award from the NJ Department of Education for her work as a stand-out educator in the state of NJ. Ms. Scarangelo is a proud member of ACDA and NAFME.

PHILLIP STEFFANI



Principal Accompanist

Coriste & Sola Voce Accompanist

Phillip Steffani graduated magna cum laude from Westminster Choir College with a B.M. in Theory and Composition, with organ and voice concentrations.

Phillip has performed with the great orchestras of the world, including the New York Philharmonic, Philadelphia Orchestra, Cleveland Orchestra and London Philharmonic. Before attending Westminster, Phillip studied piano with Peter Takacs at the Oberlin Conservatory of Music. He currently teaches Choral and General music at St. Helena School in Edison, NJ and is the Organist and Choirmaster at the Church of the Immaculate Conception in Spotswood, NJ. Phillip also teaches piano and theory privately. Phillip has been the recipient of Papermill Playhouse's "Rising Star" award for best musical director. As a composer, Phillip receives commissions from numerous schools, churches, and other organizations. He serves as accompanist for several choral groups and has accompanied numerous choral festivals and competitions. In addition to accompanying and teaching piano privately, Phillip is also a cellist and singer.

ANDREW MACIROWSKI



Camerata & Cor Amici Accompanist

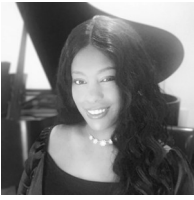
Andrew J. Macirowski is a multi-instrumentalist, composer, conductor and educator. A life-long resident of central New Jersey, (though an avid world traveler), he has taught choir, orchestra and band, for many years in both public and private schools at all grade levels.

Andrew received his Bachelor of Music Education with a concentration in clarinet and conducting from the Mason Gross School of the Arts at Rutgers University and a Master of Arts degree from Saint Leo University.

As a performer and conductor, he is in high demand throughout New Jersey and the greater metropolitan area, having played the stages of NJPAC, Carnegie Hall, and the Kennedy Center. He also also been featured as a soloist with the Diocese of Trenton Festival Choir and has been a guest organist at St. Peter's Basilica in Rome, Italy. His compositions range from simple art songs to large scale works and arrangements for band, choir, and orchestra.

In addition to his work as a freelance performer, he currently holds the post of Coordinator for Worship and Music and Principal Organist at the Parish of Saint Mary in Colts Neck NJ, Director of Choral Activities at Red Bank Catholic High School, and is a staff accompanist with the New Jersey Youth Chorus. As a firm believer in music education for all, he also offers his services as an educational consultant. He resides in Ocean County with his wife and three children.

LEAH FRANK



Primo Coro Accompanist

Leah Frank is a full-time pianist, violinist, violist, organist, educator, and music director. She holds a Master of Music degree from the Cleveland Institute of Music upon completion of undergraduate studies at Baldwin Wallace University. Ms. Frank is a two-time concerto competition winner, and a recipient of the American Guild of Organists Scholarship Award and Mu Phi Epsilon Marian Bowker Davidson Collaborative Piano Award. She has premiered and recorded multiple neoclassical works of living composers. Ms. Frank is based in New Jersey and is a U.S. Army veteran.



Celestino's

PIZZA & RISTORANTE



**EXCEPTIONAL FOOD.
FRIENDLY SERVICE.
EVERY TIME.**

YOU CAN COUNT ON CELESTINO'S TO BRING PEOPLE TOGETHER OVER EXCEPTIONAL FOOD THAT SATISFIES EVERYONE'S CRAVINGS. WITH FRIENDLY SERVICE, CONVENIENCE AND JOY IN EVERY INTERACTION.

590 CENTRAL AVE, NEW PROVIDENCE

ORDER NOW VIA WEBSITE/CALL
CELESTINOSNP.COM
908-450-4021



DINE-IN | TAKEOUT | FREE DELIVERY | PARTY/EVENT ROOM | CATERING



NEW JERSEY YOUTH CHORUS

PRIMO CORO

Kian Amaral
Miles Apgar
Ranveer Bakhru
Basmath Balvin
Taphath Balvin
Madeline Baumann
Willa Betlyon
Kiran Betzer
Eleni Brousti
Aira Chakaravarty
Kari Chan
Hia Chopra
Sloan Dickson
Emily Eshanov
Theodore Fordham

Cypress Fragale
Sienna Gubitosa
Olivia Hu
Shanysa Jayant
Aurora Johnston
Avanti Kapilavai
Luka Kurtanidze
Anna Lam
Benjamin Lau
Isabella Louren-Torres
Madeleine Lee
Zoe Mattson
Frances Minnear
Kaya Nankar
Sophia Ouyang

Elizabeth Pan
Karina Prakash
Theresa Sankel
Arhea Saxena
Yumi Sellado
Priya Sen
Aishwarya Singh Manohar
Arunima Sinha
Mahima Varthakavi
Prisca Veera
Logan Wolper
Naomi Zaytman
Carlin Zhao

COR AMICI

Lionel Araujo
Everett Chiao
Avi D'Sa
Luke DeAngelo
Salvatore DeSarle-Scarpulla
Liam Gunderman

Jeremy Hart
Joseph Hirsch
Benjamin Hughes
Ian Jia
Vihaan Kava
Archan Mehta

Varun Nutulapathi
Michael Richard
Chris Sheng
Ranvijay Pratap Singh
Manohar
Steven Whitman

SOLA VOCE

Ellie Agresto
Raquel Aller
Suhana Arora
Sharanya Bhattacharya
Ava Belle Bossotti
Olivia Bryson
Charlotte Caruso
Isabelle Chen
Lillia Choi
Ahana Dalmia
Hannelore Deng
Devika Dhanesh
Eliana Dorner
Riva Doshi
Emmaleyah Dunac
Nola Farese
Isabel Ge

Rhea Gorhe
Amelie Greenfeld
Eleanor Grundy
Aara Jain
Kairady Johnson
Raina Kamath
Zara Kameswaran
Aahana Kundu
Sonya Kushnirskiy
Grace Liu
Ilana Losavio
Anusha Malhotra
Sophie Mar
Elizabeth Marcus
Zelda McCarthy
Mary Mild
Vedha Nandakumar

Stuti Nanhorya
Olivia Nery
Ira Patnaik
Ariana Perez
Spatika Prasanna
Tia Praveen
Ira Sahay
Ritika Sanghvi
Julie Scarpin
Sophia Shieh
Shivangi Singh
Ira Singh
Maria Catarina Vaz Bollmann
Ceci Young
Emily Yu

CAMERATA

Joshua Aguilar
Kyle Amaral 🎓
Jonas Apostolakos 🎓
Kyle Arita
Hiran Chakravarthy

Jack De Angelo
Nicolai Holm
Harish Jade
Adit Kapadia
Dev Malhotra
Naman Mehta

Emmanuel Okonkwo
Dev Patel
Charles Ruebling-Jass
Nithin Sivaraman
Samuel Trindade
Zachary Wan

CORISTE

Erika Avery
Aaratrika Banerjee 🎓
Emily Bu
Samantha Calanog
Saatchi Chattopadhyay 🎓
Aanya Chowdhury
Ashley Comstock
Vaari Doshi
Diksha Durairaj 🎓
Miya Feng
Nicole Fezenko
Siya Gokhale
Nitya Gupta
Riya Guru 🎓
Courtney Halldorson
Julia Halldorson 🎓
Drew Henry 🎓
Norah Hughes
Myesha Jain
Neeve Jhaveri

Sahana Kulasekaran
Priyanka Kumar
Taylor Lora
Charlotte McLaughlin
Connie Mercado
Audrey Meyer
Isabel Meyer 🎓
Diya Mohan
Aarya Mulgund
Josephine Nam
Diya Nandakumar 🎓
Sonia Nikhil
Tarika Nirula
Jane Nys
Maria Pasqua 🎓
Siri Patil
Nitya Raimugia
Shreya Rao
Sloane Reali 🎓
Scarlett Redanz

Meera Saha Choudhury
Christina Sankel
Noa Santoro
Talia Sarafian 🎓
Anoushka Sen
Mehr Shah
Myra Shah
Krisha Shankarnarayan
Avneet Singh
Rachael Snowsson
Megha Srinivas
Avni Valliappan
Naomie Verma
Elizabeth Villacres 🎓
Rachel Zack

🎓 *Denotes graduating senior*

NEW JERSEY YOUTH CHORUS

ARTISTIC TEAM

Trish Joyce, *Founder and Director; Coriste Director, Primo Coro Director*
Joanna Scarangelo, *Sola Voce Director*
Daniel Malloy, *Camerata Director, Cor Amici Director*
Phillip Steffani, *Principal Accompanist, Coriste & Sola Voce Accompanist*
Andrew J. Macirowski, *Camerata & Cor Amici Accompanist*
Leah Frank, *Primo Coro Accompanist*

Instrumentalists:

Mason Chu, *violin*
Ameya Srinivasan, *violin*
Elijah Shemesh, *cello*
Nik Ruzicka, *percussion*

WHARTON ARTS ACCESSIBILITY

Wharton Arts is committed to being accessible to all patrons, students, parents and visitors. All programs, classes, events, and concerts are accessible ensuring that everyone can participate in a diverse range of arts programming and classes. As an organization whose mission is dedicated to the positive impact music can have on individuals and in the communities we serve, we are dedicated to fostering a supportive and fully inclusive environment by embracing equity, diversity, inclusion, and belonging (EDIB) in all of our initiatives.

Large Print Programs are available to patrons at all performances. Upon request, and with two weeks advance notice, specific accommodations such as assisted listening devices and priority seating will be made subject to our available resources.

Wharton Arts respects the needs of individuals with disabilities who are assisted by a companion (or companions) when participating in our programs. We understand that companions may either be individuals or service animals. We will make every effort to accommodate companion situations with regard to seating, mobility, and other needs as they arise for all our programs.

Wharton Arts does not and shall not discriminate on the basis of race, color, religion (creed), gender, gender expression, age, national origin, marital status, sexual orientation, or military status in any of its activities or operations.

How can we help make your visit better? Let us know by contacting Director of Operations Susan Peterson at 908-790-0700, ext. 114 or via email at susan.peterson@WhartonArts.org.

Visit our patron services page at:

<https://whartonarts.org/about/patron-services/>



New Jersey Youth Chorus

SENIOR GIFT 2025-2026

Senior year is a time of reflection, gratitude, and excitement, and it is also an opportunity for our singers to leave a lasting impact. Please consider a gift to the 2026 Class Gift. Your contribution will help future generations grow with NJYC.



SCAN TO DONATE



For more information, contact Nancy Tagle, Director of Development nancy.tagle@whartonarts.org

WhartonARTS
Helen H. Cha-Pyo, Artistic Director

New Jersey Youth Chorus

WhartonARTS

Helen H. Cha-Pyo, Artistic Director

Sing. Grow. Belong.

Welcoming at the door
Extraordinary in song

Auditions

Open to singers entering grades 3 - 12
Auditions in June



Young
singers build
confidence,
musicianship,
and lifelong
friendships.

Questions? Call
(973) 998-5670
or email info@njyc.org.

Learn more at
NJYC.org

Auditions are held in
a relaxed and
supportive setting.



Wharton Institute for the Performing Arts is a non-profit 501(c)(3) charitable organization and is committed to being accessible to all patrons, students, parents and visitors. All programs, classes, events and concerts are accessible ensuring that everyone can participate in a diverse range of arts programming and classes.



Made possible by funds from the
New Jersey State Council on the Arts, a partner
agency of the National Endowment for the Arts.

Wharton Community Players Present



Shakespeare's

A Midsummer Night's Dream

June 12, 13 & 20 at 8:00 p.m.

June 14 & 21 at 2:00 p.m.

Wharton Black Box Theater | 60 Locust Avenue, Berkeley Heights
\$25/Adults, \$20/Students & Seniors

Start your summer season with **Wharton Community Players'** production of *A Midsummer Night's Dream*, directed by Wharton's own Lilli Markey. Magic, love, and mischief collide in Shakespeare's whimsical comedy. When a group of lovers and amateur actors venture into a forest ruled by mischievous fairies, chaos and enchantment ensue. Filled with mistaken identities and magical transformations, this timeless tale explores the unpredictable nature of love, all under the spell of moonlit mischief.



Scan for
Tickets

More information at WhartonArts.org

WhartonARTS

Helen H. Cha-Pyo, Artistic Director

WhartonARTS

Helen H. Cha-Pyo, Artistic Director

2025-2026

Annual Appeal



Prisha Gudimella

NJYC Alumna

“Of all the lessons NJYC has given me, the idea of living with intention is the one I carry with me most. Just like in singing, approaching life with purpose and thoughtfulness makes everything feel more meaningful—and often, more manageable. I’m deeply grateful to Mrs. Joyce for teaching me this through music.”

Donate today at

WhartonArts.org

WHARTON ARTS DONORS

Wharton Arts extends deep gratitude to our donors, including individuals, family foundations, and corporate sponsors, for their unwavering commitment to our organization. Your generosity serves as the bedrock for all our programs, fostering the growth and success of the New Jersey Youth Symphony, New Jersey Youth Chorus, the Performing Arts School, and the Paterson Music Project.

Your invaluable support provides financial aid, broadens the scope of our free community workshops, programs, and festivals, and champions equity in music education for children across New Jersey. Thank you for bringing the gift of music to countless children, families, and communities! This list includes donations made from January 1, 2025 to February 4, 2026. Please contact us if you see any errors or omissions.

Visionary \$50,000 and Above:

Lenore and Robert Davis
Carol Davis and Dr. Joel Marcus
Robert and Cynthia Hamburger
Mustang Foundation
New Jersey State Council on the Arts
The October Mountain Foundation
The Pixley Hill Foundation
Robinwood Foundation
Frances and Paul Turner
Ruth Zowader

Champion \$25,000 - \$49,999:

Audrey Love Charitable Foundation
Helen Cha-Pyo and Dr. Daniel Pyo
Citadel Enterprise Americas
Erika and Carmine Fanelle
Galanthus Foundation Trust
Bob Kelly
Johnson & Johnson
Pantirer Families
Paterson Children's Foundation
PwC Charitable Foundation
Dr. Jacqueline and Lionel Phillips
The Henry S. and Agnes M.
Truzack Foundation
Judith G. Wharton

Innovator \$10,000 - \$24,999:

BNE Real Estate
Find Your Light Foundation
Goldman Sachs
Kathryn Dove-Hendon and
Seth Hendon
Dr. Charissa Wong Horton and
William Horton
Ronald Keefe and Debbie Smith
Julia and Shurjo Sen
Joseph and Mary Clare Serzan
Jeanne D'Haem and Bruce Stein
Lara Stolman and Michael Watzky
The Summit Foundation
Turrell Fund
Wilf Family Foundations

Change Agent \$5,000 - \$9,999:

Dana and Joseph Feldman
E. J. Grassmann Trust
Ilyse Muser Shainbrown

Joyce and Samuel Moulthrop
Park Avenue Club Foundation
Susan and Lloyd Peterson
PNC Bank Foundation
Princeton Area Community
Foundation
Pamela and L.T. Spinker
Inge and David Spungen
Belá and Alice Szigethy
Union Foundation
The Westfield Foundation

Leader \$2,500 - \$4,999:

Blue Foundry Charitable Foundation
Kim and Bruce Cha
Sumi Choi
County of Union
D'Addario Foundation
Juliet and James Eck
Scott Gasparini
Kathleen and David Jones
Patricia and Paul Joyce
New Jersey Council for the
Humanities
Wei Pan and Angela An
The Sterling Properties Group, L.L.C.
Sally and Marshall Tycher
Naida S. Wharton Foundation
Judy and Len Wharton

Advocate \$1,000 - \$2,499:

Basking Ridge Presbyterian Church
Robert Booth and Bronwen Cunningham
Robert Booth
Emily Buehler
Burgdorff Foundation
Alyssa Camacho
Gina Maria Caruso
Dennis and Cathy Cha
Yajia Chen and Kenneth Farah Jr.
Yu-Hsin Chen
Julia Cheng
Marc Chiapperino
Edward and Madison Chu
Jill D'Agostino
Elizabeth and Nick De Angelo
The Discovery Orchestra;
Executive Director
Deborah and Benjamin Dornier
Philip and Amy Evans
Melanie Evans-Lowenberger
Andrew & Sharleen Friedman

Diane Gigliotti
Patricia and Orren Grushkin
Michelle Hatcher
Jacob Heil
Prina Hiller
Allan Janoff
Hunter Janoff
Michele and David Johnson
Virginia Johnston and Daniel Crisci
JPMorgan Chase
Arjun Kapur
James Kelly
Sharon and Stephen Kepniss
Kessler Foundation
Barbara Kipper
Fran Lee
Jacqueline and Barry Levine
Louise and Stuart Levine
Main Violin Shop
Crystal Matsibekker
George Marriner Maull and Marcia Maull
Nancy Modell
Mindy and Alex Opper
Otterstedt Insurance Agency
Peapack Private Wealth Management
PKF O'Connor Davies, LLP
The Selvig Family
Penny Simon
Lillian Song
Rebecca and Heath Weisberg
Women's Philharmonic Advocacy
Shirly Wu and Max Clyan
The Zhang Family

Friend \$500 - \$999:

Lisa and Andrew Abramson
Mary Coogan
Helen Ahn and Joseph Kwiatek
Assad Akhter and Saira Hussain
Talia Ausiello
The Ausiello Family
Brenda Belmont
Jamie Bernstein
Susan Bloom
Jan and Adam Brenner
Bristol-Myers Squibb PAC Match Program
Philip Calinda
Dianna and Dohyun Cha
Catherine and Larry Cook
Carol Ulmer and Ken Degen
Jacqueline Biello and Jacob Dowden
Andrew Erlman
Victoria Fulop
Goldman, Sachs & Co.
David Goldstein

Goodman's Deli
Charles Grundy
Myles Guillaume
Sharon and David Halpern
Bill Horton
Yichin Huang
Sherry Wilzig Izak
Maura and Michael Janiszewski
The Joyal Family
James Justice
Carol Lynn Kabacoff and Robert Kabacoff
The Kahng Family
The Kaushal Family
The Kim Family
Mark Kuprych
Grace Lee and David Lin
Cheryl Lee
Terri Levato
Qing Li and Lin Cong
Elana Livneh
Maureen and Tom Matthias
Theresa and Gregory Meese
New Music USA
The Ng Family
Avigail and Paul Noble
Claudia and Igor Nys
James Ooi and Amy Yin
Paycom
Robert Francis
Susie and Peter Polow
Tracy and Doreen Proverbs-Singh
PSEG Foundation, Corporate
Citizenship & Culture
Natalie and Robert Schlundt
Penny and Stephen Seeder
Edward Shen and Ivy Ying
Yavanika Sinha and Kislaya Gautam
Nikhil and Noreen Soares
Pamela Sousa and Michael Keller
Stephen and Olivia Truong
Emma Ung
John and Marilyn Van Dyke
Ben and Jacqueline Wald
Janet Wang
Chao Xu and Lijue Wang
E Yang and Lei Chen
Dawei Zhu and Honghong Zhou

Supporter \$250 - \$499:

Golchehreh Abtahian and
Jonathan Shehee
Accents Dancewear
Tatev Ambartsoumian
The Baum Family
Dianna Beck-Clemens
Beiling Belfield
Brenda Belmont
Ron Blake
Jaclyn and John Bohner
Nevena Bojovic
Myung and David Bondy
Ann and Stanley Borowiec
William Bryant
Ruth Cao
The Cashin Family
Johann Chen
The Cheng Family
Yunzhe Chi
The Chi Family

Katie Choi
Slawomir Cholewicki
Mason Chu
Lisa Colone
Maryanne and David Dacey
Ingrid Dillon
Eva and Adam Dooley
Barbara and Andrew Dunn
Regis Fernandez
Michele Fullam
Judith Greener
The Hock Fmaily
Ananya Holland
Yu Hong and Beixin Lin
The Jacques Family
Kieran Jani
Grafton Kirk
Leonardo Lee
Thornton and Maureen Lewis
The Li Family
The Liu Family
The Loeser Family
Isaac Ma
Tara Mang
Joy Mathews
The McCarthy Family
Carolyn McCombs
The Mendel Family
Marc and Lisa Michelson
Hemant Mikkilineni
The Moon Family
Raul Hauman
Daniel Moulthrop
The Navarro Family
Anisha Nigam and Santosh Kumar
Gavin Nugent
Grace and Dave Park
Amy Pisechko
Smitha Raghuvver
Judith and Donald Richards
Janet Robusto
Svetlana Sabel
Ilyse and Ian Shainbrow
The Simon Family
Sebastian Soloff
Jian Song
The Springer Family
The Sun Family
The Tagle Family
Spencer Traub
Ivy Truong-Tom
Tricia Tunstall
Pam and Frank Venturella
Wen and Zhongshan Wang
Michael and Caroline Whittemore
Emily Wolper
Krystal Woolston
The Wu Family
The Zhou Family
The Zhou Family
Yong Zu and Nicola Ou

Donor \$100 - \$249:

The Allatta Family
Natasa Ancevska Taneva
The Bang Family
The Bania Family
The Begasse Family
Lauren and Jordan Bettman

The Biello Family
Darren Blumberg
Dr. Sonal Bordia and Sandeep Bordia
Mikhail Boroditsky
Lindsey Bzura
Korie and Leo Caruso
Elizabeth and George Caviness
Christine Cha
I-Min Chao
Vickie Chao
Victor Chen
The Cheng Family
The Choi Family
Luke Chua
Geoffrey and Deborah Close
Jeri and Robert Cohn
Cindy Cotter
The Dalena Family
The Dang Family
Amy Davis and Dan Walker
Ann DeCamp and David Melillo
Chunyan Deng
Rosemary Dewitt
Nishta Dhawan
The Dowden Family
Bonnie Elbaum
Sydney Espina
The Failla Family
The Farzad Family
The Ford Family
Bethany Foullois
Frederick Fuller
Sally Fullman
Margaret Gelsi
The Gliotti Family
Nandu and Meenu Gopalakrishnan
The Gorman Family
Daina Gulbis and Tom Damratoski
Phyllis J Haag
Elizabeth and Owen Harnew
Emily Hauck
Ning He
Matthew Heyer
Eric Hirsch
The Hoang Family
Christopher Hock
Ronald and Carol Hock
Bruce and Carla Hogg
The Hou Family
Annie Hsieh
Amal Hussein
The Huseein Family
The Jacoby Family
The Jaeger Family
Yahan Jiang
Johnson & Johnson
David Joiner
Levi Kelman
Alison Kessler
Mina Kim
Joseph Kimmel
Paul Kimmel
Madge Klais
The Knoll Family
Carol Krall
Joel Krayner
Elaine Kuo and Jie Zhu
Yi Yang Lau
The Lee Family

The Lerner Family
 Gail Levinson
 Jeffrey Li
 The Li Family
 The Lichtenbergerr Family
 Shanna Lin
 Wendy Liscow
 Rong Liu and Jing Su
 Yuxin Wang and Fei Liu
 Shannon Llewellyn-Jones
 Carol Loscalzo
 Andrew Lynch
 The Malleo Family
 Carla Martin and David Sankel
 The Mayfield Family
 Ananya Mehta
 Tracey Mendel
 Judith Mender
 The Merzatta Family
 Matthew Metoxen
 Jennifer Michelson
 Phyllis & Al Mirabella
 The Misiewicz Family
 Amy Moldavansky
 James and Carolyn Moore
 Sheila E. Munson
 Abitha Narayanan
 Michele Neelakantappa
 Adrienne Ostrander
 The Pally Family
 Jessica Horan Payne

The Pazniokas Family
 Michelle Perez
 Susan Pixley
 The Pyo Family
 Kara Rabbitt
 Caroline Rader
 The Rakotci Family
 The Reed Family
 The Reilly Family
 The Riddle Family
 Roberta Farber
 Aaron and Judith Rosenberg
 Melinda Rostal
 The Rudewick Family
 Marianne Samson
 The Samuels Family
 The Sattler Family
 Mayor André Sayegh and
 Farhana Balgahoom
 Susan Scherer and David Furst
 Kathryn and Joseph Schmidt
 Bette Schmitt
 Alex Shellhammer and Safiya Abouzaid
 Rebecca Shen
 Patricia Slezak
 The Smerillo Family
 Sherrie Sun
 Sandi and William Sweeney
 Teknikon Group Inc
 The Tienou Family
 Kathryn and Thomas Tobitsch

Jaahnvi Toolsidas
 The Torrens Family
 The Torres Family
 The Truong Family
 Paula Tyson
 Robert Varnay
 Felipe Velazquez
 Stephen Verdesca and Patricia Durner
 Jodi Visco
 Christa and Nic Volpicelli
 Jack Walker
 The Walker Family
 Joan Walsh
 Weiling Wang and Chin-Yao Kuo
 The Wang Family
 The Wang Family
 The Wei Family
 Linda Wellbrock and Nils Knagenhjelm
 Gary and Lois Whitman
 The Woo Family
 The Wright Family
 The Xie Family
 The Yang Family
 Rita Yeretsian
 Tricia Yeung
 The Zavelskaya Family
 Svetlana Zavelksya
 Evelyn Zhai
 Sherry Zhang and Henry Xie
 The Zhao Family
 Caroline Zhou



Rigoletto - February 7 & 8
 Sieminski Theater, Basking Ridge, NJ



Stars of Tomorrow - April 19
 St. Mark's Church, Basking Ridge, NJ



A Capella Jamboree - May 24
 St. Mark's Church, Basking Ridge, NJ



H.M.S. Pinafore - July 11 & 12
 Sieminski Theater, Basking Ridge, NJ



A Celebration of the Stage - October 4
 St. Mark's Church, Basking Ridge, NJ



The Mikado
 Various Dates & Locations
 Check Website

✦ 2026 ✦

*Light
 Opera
 of NJ*



www.lonj.org



WhartonARTS

Helen H. Cho-Pyo, Artistic Director

Summer
Camps 2026

June 21 - August 7

Performing Arts School

Music Around the World

Meet the Instruments

Piano Explorers

Violin Explorers

Broadway Adventures

Theater Explorers

Triple Threat Musical

Theater Intensive

Drama Kids

New Jersey Youth Symphony

June 21 - July 2

Orchestral Camp

Chamber Music Camp

Double Reed Camp



More information at
WhartonArts.org

WHARTON ARTS BOARD OF TRUSTEES

Robert Hamburger, *Co-President*
Julia Sen, *Co-President*
Michele L. Johnson, *Vice President*
Dr. Jacqueline Phillips, *Vice President*
Dr. Charissa Wong Horton, *Secretary*
Ingrid Dillon, *Treasurer*

Helen Ahn, *Trustee*
Jeanne Brown, *Trustee*
Helen H. Cha-Pyo, *Ex Officio*
Erika Fanelle, *Trustee*
Robert Kelly, *Trustee*

Levi Kelman, *Trustee*
Courtney Pantirer, *Trustee*
Reid Powell, *Trustee*
Jason Scott, *Trustee*
Joseph Serzan, *Trustee*
Cristina Sierra, *Trustee*
LaTarius Spikner, *Trustee*
Inge Spungen, *Trustee*
Lara Stolman, *Trustee*
Judith G. Wharton,
Founder and Trustee Emeritus

STAFF

PROGRAM STAFF

Helen H. Cha-Pyo
Artistic Director

New Jersey Youth Chorus

Trish Joyce, *Founder and Director*
Krystiana Machtinger, *Director of Chorus Administration*
Allie Lisner, *Program Coordinator*

New Jersey Youth Symphony

Helen H. Cha-Pyo, *Artistic Director & Principal Conductor*
Stacy Square, *Director of Orchestra Administration*
Desirée de Logé, *Manager of Orchestras*
Naomi Smith, *Assistant Manager of Orchestras*
Tanner Age, *Librarian*

Paterson Music Project

Shanna Lin, *Director*
Emily Buehler, *Manager of Programs and Community Engagement*
Tori Boell, *Administrative Coordinator*
Joseph Shinnick, *Program Coordinator, Band Curriculum Coordinator*
Sam Tobias, *Jazz Program Coordinator*

Performing Arts School

Debra Joyal, *Director*
Natasha Loomis, *Director of Student Services*
Emalina Thompson, *Manager of Programs*
Amanda Mayer, *Student Services Associate*
Judy York, *Student Services Associate*

ADMINISTRATIVE STAFF

Erika Fanelle
Trustee, Interim Executive Director

Development

Nancy Tagle, *Director of Development*
Elizabeth Piercey, *Grant Writer*

Marketing

Alice Hamlet, *Director of Marketing*
Aimee Roehler, *Social Media & Digital Content Manager*

Operations

Susan Peterson, *Director of Operations*
Adrienne Ostrander, *Operations & Office Manager*
Roger Sweet, *Production Manager*
James Choi, *Production Assistant*
Kelley Louder, *Production Assistant*
Cedric Sanders, *Building Manager*

Finance

Eva Dooley, *Director of Finance and Administration*
Jillian Lyons, *Comptroller*

STUDENT LEADERSHIP ALLIANCE

Destinee Feliciano, *Passaic County Technical Institute, PMP*

Jingyi Han, *Peddie School, NJYS*

Vikrant Khanvilkar, *Bridgewater-Raritan HS, NJYS*

Priyanka Kumar, *Bridgewater-Raritan HS, NJYC*

Giovanni Maldonado, *Rosa L Parks School of Fine and Performing Arts, PMP*

Shakthi Prasanth, *Chatham HS, NJYS*

Pippa Raaijmakers, *Governor Livingston HS, PAS*

Noa Santoro, *Watchung Hills Regional HS, NJYC*

Kashika Sinha, *Governor Livingston HS, PAS*

Haley Aurora Vallecillo, *Passaic County Technical Institute, PMP*

Anisha Verma, *New Providence HS, PAS*

Rachel Zack, *New Providence HS, NJYC*

WhartonARTS

Helen H. Cha-Pyo, Artistic Director

Wharton Arts' mission is to offer accessible, high quality performing arts education that sparks personal growth and builds inclusive communities.

Wharton Arts' vision is for a transformative performing arts education in an inclusive community to be accessible for everyone.

Wharton Arts is New Jersey's largest independent non-profit community performing arts education center serving nearly 2,000 students through a range of classes and ensembles. The 5 ensembles of the **New Jersey Youth Chorus**, an auditioned choral ensemble program for students in grades 3-12, encourage a love and appreciation of choral music while nurturing personal growth and creative development. The 15 ensembles of the **New Jersey Youth Symphony**, which serve over 500 students in grades 3-12 by audition, inspire young people to achieve musical excellence through high-level ensemble training and performance opportunities. Based in Paterson, the **Paterson Music Project** is an El Sistema-inspired program of Wharton Arts that uses music education as a vehicle for social action by empowering and inspiring young people to achieve their full potential through the community experience of ensemble learning and playing.

From Pathways classes for young children to Lifelong Learning programs for adults, the Wharton **Performing Arts School** has a robust musical theater and drama program and offers both private and group classes for instruments and voice for all ages and all abilities. With the belief in the positive and unifying influence of music and that performing arts education should be accessible to all people regardless of their ability to pay, Wharton Arts offers need-based scholarships.

Wharton Arts is located in Berkeley Heights, New Providence, and Paterson, NJ and reaches students from 12 counties. All of Wharton Arts' extraordinary teaching artists, faculty members, and conductors hold degrees in their teaching specialty and have been vetted and trained to enable our students to achieve their personal best.

Wharton Arts

60 Locust Avenue

Berkeley Heights, NJ 07922

908-790-0700 **WhartonArts.org**



@WhartonArts



@wharton_arts

DONATE HERE





PURSUE *Your* PASSIONS

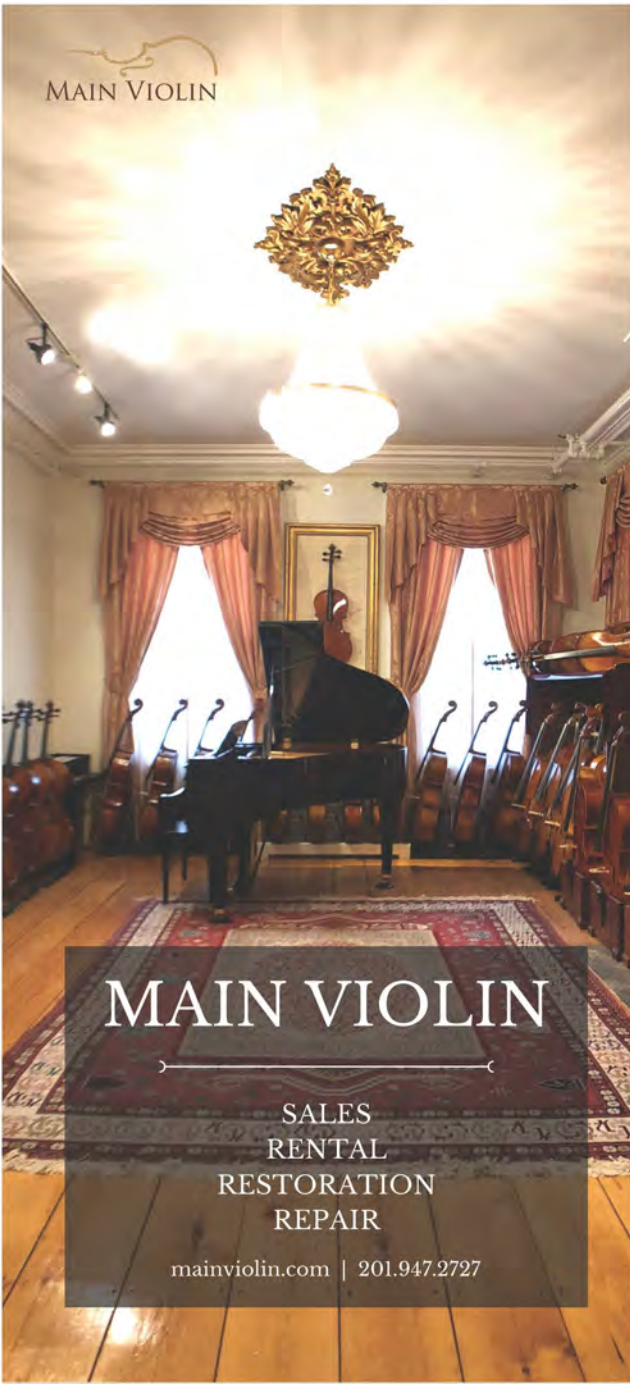


EASTMAN
SCHOOL OF MUSIC
UNIVERSITY of ROCHESTER

For application information visit esm.rochester.edu/admissions



MAIN VIOLIN



MAIN VIOLIN

SALES
RENTAL
RESTORATION
REPAIR

mainviolin.com | 201.947.2727

