

SUMMER CAMP 2024



Register Online at WhartonArts.org

Summer Camp INFORMATION

Register for **private lessons**

or **summer camp** online at

WhartonArts.org

The 2024 Summer Camp

Early Registration Deadline

is **April 1, 2024.**

Early Drop Off Starting at 8:30 a.m. (All Ages, \$75 per week)

Need to drop you child off early to camp?

We will entertain them so that you can get on with your day!

Lunch Bunch 1:00 - 2:00 p.m. (All Ages, \$75 per week)

Enjoy lunch with camp friends!

After Care until 6:00 p.m. (Ages 7-16, \$300 per week)

Campers have the option to stay in the afternoon from Monday - Thursday to enjoy lunch on campus, guest artist workshops, and fun in the sun at the Wharton Performing Arts School and across the street at the Berkeley Heights Community Pool.

Illustrations by Christina Bauer



@tina_b_draws



Made possible by funds from the New Jersey State Council on the Arts, a partner agency of the National Endowment for the Arts.



Wharton Arts is a 501[©](3) charitable organization and is committed to being accessible to all patrons, students, parents, and visitors. All programs, classes, events, and concerts are accessible ensuring that everyone can participate in a diverse range of arts programming and classes.

Summer EXPLORERS



Music Around the World

6/24 - 6/28

9:30 a.m. - 1:00 p.m.

Tuition: \$395

Tuition Early Registration: 5% Off

Director: Joyce Alexander

Ages 4-7

Explore musical traditions and cultures around the world through different instruments, crafts, and traditional clothing. Campers will dance, sing, play games, and learn new words from a new country each day. Grab your passport and set sail on a musical adventure! Extend your day and enjoy lunch with friends until 2:00 p.m.



NEW!

Piano Explorers

7/8 - 7/12

9:30 a.m. - 1:00 p.m.

Tuition: \$395

Tuition Early Registration: 5% Off

Director: Joyce Alexander

Ages 4-7

Designed for the beginning pianist, campers will learn how to locate notes on the piano, correct hand position and posture, rhythms, music symbols, note values and solfeggio through musical games and movement activities. Come hear your camper perform in Wharton's piano lab on the last day of camp! Extend your day and enjoy lunch with friends until 2:00 p.m.

NEW!

Violin Explorers

Ages 4-6

7/15 - 7/19

9:30 a.m. - 1:00 p.m.

Tuition: \$395

Tuition Early Registration: 5% Off

Our youngest campers will explore all things violin from building their own box violin to being fitted for their very first instrument. This is a wonderful opportunity to try out the violin in a fun and nurturing environment. Instrumental rental fee not included in camp tuition. Extend your day and enjoy lunch with friends until 2:00 p.m.



Register Online at
WhartonArts.org





Theater Explorers

Ages 7-13

6/24 - 8/23

9:00 a.m. - 1:00 p.m.

Tuition: \$400/week

Tuition Early Registration: 5% Off

Director: Timothy Maureen Cole

Theater Explorers introduces students to musical theater in a fun weekly half-day camp. Campers work together to create an original script based on the theme of the week. A showcase featuring scenes, songs, and dances is performed on Fridays at 5:00 p.m. Campers have the option to stay in the afternoon from Monday - Thursday to enjoy lunch on campus, guest artist workshops, and fun in the sun at the Wharton Performing Arts School and across the street at the Berkeley Heights Community Pool.

Register for one or more weeks!

Inquire about our after-camp activities option.

Weekly Themes

Week 1 (6/24-6/28): *High School Musical*

Week 2 (7/1-7/3): *Harry Potter*

Week 3 (7/8-7/12): *Alice in Wonderland*

Week 4 (7/15-7/19): *Willy Wonka*

Week 5 (7/22-7/26): *Trolls*

Week 6 (7/29-8/2): *Percy Jackson: The Lightning Thief*

Week 7 (8/5-8/9): *Descendants*

Week 8 (8/12-8/16): *The Greatest Showman*

Week 9 (8/19-8/23): *Broadway Week!*

Register
for one
or more
weeks!

Triple Threat Musical Theater Intensive

Ages 7-11

7/8 - 7/19

9:00 a.m. - 3:30 p.m.

Tuition: \$950

Tuition Early Registration: 5% Off

Show: *Willy Wonka JR.*

Performance Date: 7/19 at 2:00 p.m. & 7:00 p.m.

Director: Timothy Maureen Cole



Come and hone your skills in acting, singing, and dancing in this two-week intensive camp! Campers perform a production of *Willy Wonka JR.* from start to finish! Focus is on developing triple threat skills and putting them on display in two show-stopping performances at the end of camp. Jazz shoes required.



Explorations in Voice & Art

Ages 11-16

7/22 - 7/26

9:30 a.m. - 1:00 p.m.

Tuition: \$450

Tuition Early Registration: 5% Off

Director: Tharanga Goonetilleke

Experience singing with all of your being! We will listen and sing rhythmic and melodic material to discover parallels between what we hear and what we can visualize. Come ready to imagine, dream, paint, and more! Campers have the option to stay in the afternoon from Monday - Thursday to enjoy lunch on campus, guest artist workshops, and fun in the sun at the Wharton Performing Arts School and across the street at the Berkeley Heights Community Pool.

Summer Musical Theater Company

Ages 11-16

7/22 - 8/2

9:00 a.m. - 3:30 p.m.

Tuition: \$995

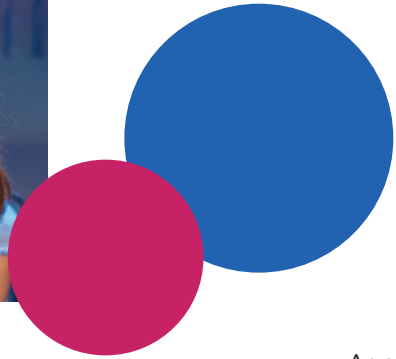
Tuition Early Registration: 5% Off

Show: *The Lightning Thief: The Percy Jackson Musical*

Performance Date: 8/2 at 2:00 p.m. & 7:00 p.m.

Director: Timothy Maureen Cole

Summer Musical Theater Company is a fast-paced triple threat experience in just two weeks! Campers audition, rehearse, and prepare for two full performances of the fun and popular *The Lightning Thief: The Percy Jackson Musical*. Come and show us what you've got! Jazz shoes required.



Drama Kids

Ages 7-14

7/29 - 8/9

9:00 a.m. - 1:00 p.m.

Tuition: \$700

Tuition Early Registration: 5% Off

Show: *James and the Giant Peach*

Performance Date: 8/9 at 1:00 p.m.

Director: Lilli Markey

This two-week camp is designed to unleash the artist within with classes in movement, acting, and improvisation. Campers learn about theater while preparing a play from start to finish. On the final day of camp, students will present *James and the Giant Peach*, based on Roald Dahl's beloved children's classic, performed with costumes, scenery, and lights.



Shakespeare in the Parking Lot

Ages 10-16

8/5 - 8/16

9:00 a.m. - 1:00 p.m.

Tuition: \$725

Tuition Early Registration: 5% Off

Show: *Macbeth*

Performance Date: 8/16 at 1:00 p.m. & 7:00 p.m.

Director: Jenna Burke

Students work together to put on a unique production of our first Shakespearean tragedy, *Macbeth*, from start to finish in just two weeks, complete with costumes, props, and sets. This camp is perfect for the budding actor interested in learning about theater, the classics, and performance!

Early
Registration
Deadline:
April 1, 2024

New Jersey Youth Chorus

WhartonARTS



NEW!

NJYC Choir Camp

Entering Grades 3-4

7/15 - 7/19

9:30 a.m. - 12:30 p.m.

Tuition: \$350

Tuition Early Registration: 5% Off

Director: Trish Joyce

The New Jersey Youth Chorus Choir Camp offers young singers an exciting introduction to the choral experience through singing, games, and activities. With a fun new theme each day, our campers will learn and explore this summer through song! Inquire about our lunch bunch and after-care options.



New Jersey Youth Symphony

WhartonARTS

Chamber Music Camp

6/24 - 7/5 (no camp 6/29, 6/30, 7/4)

11:00 a.m. - 2:00 p.m.

Tuition: \$375

Tuition Early Registration: 5% Off

Performance Date: 7/5 at 12:00 p.m.

Performance Location: 570 Central Avenue, New Providence

Director: James Keene

As part of the NJYS Chamber Camp, young musicians will have an opportunity to refine their artistic skills and collaborate with other young chamber musicians. All participants will be offered daily coaching by the string faculty and a self-guided rehearsal. If you already have a pre-formed quartet or trio and all members meet the eligibility requirements, then NJYS will admit your ensemble to the camp.

Eligibility requirements and application can be found online at [NJYS.org](https://www.njys.org). Deadline for application is May 1, 2024.

Double Reed Camp

6/24 - 6/28

12:30 p.m. - 4:30 p.m.

Tuition: \$425

Tuition Early Registration: 5% Off

Performance Location: 570 Central Avenue, New Providence

Director: Dr. Joseph Swift, Director and Bassoon

Kenneth Bader, Oboe

The New Jersey Youth Symphony's Double Reed Camp offers a dynamic summer program catering to bassoonists and oboists in the state of New Jersey and the broader Mid-Atlantic region. This immersive experience provides aspiring young musicians with the opportunity to deepen their understanding of their instrument, engage in the rich world of bassoon and oboe chamber music, connect with seasoned professional players, delve into reed crafting, explore auxiliary instruments such as the English horn and contrabassoon, participate in high-caliber ensemble performances, and, above all, foster a vibrant community of passionate young double reed players.





Orchestral Camp String Session

6/24 - 7/6 (no camp 6/29, 6/30, 7/4)

9:00 a.m. - 1:00 p.m.

Tuition: \$975

Tuition Early Registration: 5% Off

Registration Deadline: May 1

Performance Dates: 7/6 at 11:00 a.m.

Performance Location: 570 Central Avenue, New Providence

Director: Nevena Bojovic

Join the NJYS Orchestral Camp this summer for a fun and rewarding experience in either the Winds/Brass/Percussion Session or String Session. Each day, both sessions will join forces to create the NJYS Summer Festival Orchestra and perform a final concert on Saturday, July 6.

Summer String Session campers will work on building their confidence through performance and teamwork while improving their playing skills and technique. Interested in trying viola or double bass over the summer? Our students are offered a chance to try another instrument during camp and take lessons as part of the doubling program. This two-week camp experience will culminate with a final performance showcasing Strings and Symphony Orchestra.

Recommended for students whose playing level is between NJYS Solo Levels 1-4, and in 10th grade or younger. Visit NJYS.org for solo levels.

NJYS Orchestral Camp Requirements: Students who are not currently in an NJYS ensemble are required to submit a placement video by May 1. Visit NJYS.org for video submission instructions.

Register
Online at

WhartonArts.org

Orchestral Camp Wind/Brass/Percussion Session

6/24 - 7/6 (no camp 6/29, 6/30, 7/4)

12:00 p.m. - 4:00 p.m.

Tuition: \$975

Tuition Early Registration: 5% Off

Registration Deadline: May 1

Performance Date: 7/6 at 11:00 a.m.

Performance Location: 570 Central Avenue
New Providence

Director: Allan Daleus



The Summer Winds/Brass/Percussion Session is designed to continue progress built during the school year for the young wind player. Campers will play in a full camp wind ensemble with music arranged for the camp's specific instrumentation. Every student will learn to play a secondary instrument from the family of "less common" band instruments. This ranges from bassoon, oboe, trombone, French horn, and tuba and varies from year to year. Students will choose their secondary instrument on the first day of camp with the help of our Summer Winds Camp staff.

Winds/Brass/Percussion Session welcomes two types of students:

- Early stage players: 1 to 2 years of experience, beginning to learn the full potential range.
- Later stage players: 3+ years of experience on a primary instrument or exploring a secondary instrument such as bassoon, oboe, trombone, horn, and tuba.

Secondary Instrument Option: Any student embarking on a new instrument for the school year or contemplating a switch can spend the entire camp on the new instrument. At the end of the two week camp, students will perform on both their primary and secondary instruments in a final concert open to the public.

Recommended for students whose playing level is between NJYS Solo Levels 1-2, and in 9th grade or younger. Visit NJYS.org for solo levels.

NJYS Orchestral Camp Requirements: Students who are not currently in an NJYS ensemble are required to submit a placement video by May 1. Visit NJYS.org for video submission instructions.



WhartonARTS

Helen H. Cha-Pyo, Artistic Director

60 Locust Avenue
Berkeley Heights, NJ 07922

Enroll in CAMPS AND
SUMMER PRIVATE
LESSONS

WhartonArts.org
908-790-0700

Early Registration Discount Deadline:
4/1/2024